



4X4 OFF-ROAD

PRODUCT BROCHURE

Dedicated to customized high performance synthetic rope & webbing solutions for 4x4 offroad & powersports recovery. Duracordix makes your work safer, lighter and stronger.

SOLUTIONS FOR 4X4 OFFROAD

1. Precision Winching in Tough Terrains



Solution: Utilize synthetic winch rope for its strength and low stretch in challenging terrains like steep inclines. Employ a snatch block to alter pull direction or double winching power, and use a Tree Trunk Protector Strap to protect anchor points.

2. Balanced Load Distribution



Solution: Use the equaliser tow rope for evenly distributing load across multiple anchors, essential for winching on uneven surfaces to prevent vehicle damage and improve safety during recovery operations.

3. Kinetic Recovery for Quick Extractions



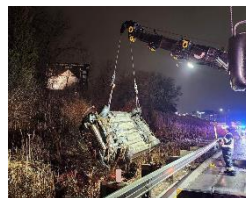
Solution: Employ the nylon snatch strap for rapid, dynamic extractions in soft terrains like mud or sand. Its elasticity stores kinetic energy for efficient pulls. Pair with soft shackles for enhanced safety and reduced risk in high-tension situations.

4. Robust Towing Capabilities



Solution: For heavy-duty towing, especially in rugged terrains, utilize polyester tow straps and UHMWPE tow ropes for their high tensile strength and resilience. Pair with a Steel Shackle Hitch Receiver to ensure a robust and secure towing connection.

5. Handling Heavy Loads:



Solution: The UHMWPE lifting sling is your go-to for relocating heavy obstacles or performing vehicle recoveries. Its lightweight yet strong properties make it ideal for offroad situations where every pound matters, yet robust performance is non-negotiable.

6. Adaptable Recovery Setups



Solution: Equip with snatch rings, steel shackles, and snatch blocks for versatile recovery setups, suitable for straight or angled pulls. Incorporate an Aluminum Shackle Hitch Receiver as a lightweight option for various recovery configurations.

7. Multipurpose Lifting and Recovery



Solution: The Hi Lift Jack is essential for offroad recovery, serving not only as a vehicle lifter but also as a manual winch when used with a Recovery Tow Hitch, offering a versatile solution for diverse recovery scenarios.

SYNTHETIC WINCH ROPE

Our synthetic winch rope made of UHMWPE fiber, the toughest material for winching. As an alternative to steel wire rope, engineered with cutting-edge technology and premium materials, our UHMWPE winch rope delivers unrivaled strength, durability, and safety.

Characteristics

- Good abrasion resistance
- Less than one tenth the weight of steel rope
- Tremendous stability against UV light
- Resistant to chemicals
- Will not kink
- Longer life and easy handling
- Easy to splice and inspect
- Has the same strength wet or dry
- It stores very little energy, therefore has little backlash if broken, improving safety
- Good replacement for wire rope & other synthetic fibers

Specification:

DIAMETER	DIAMETER	WEIGHT	KETX	KETX	BREAKING STRENGTH	BREAKING STRENGTH
mm	inch	100m(kg)	standard	error	ton	kn
5	3/16	1.7	16.62	5%	2	19
6	1/4	2.3	23	5%	3.18	31
8	5/16	4.1	40	5%	6.35	63
9	23/64	5.1	50.5	5%	7.83	78
9.5	3/8	5.6	55.75	5%	8.32	83
10	13/32	6.1	61	5%	9.32	93
11	7/16	7.5	74	5%	10.4	103
12	1/2	8.8	87	5%	12.12	121
14	9/16	12	119	5%	15.4	153
16	5/8	15.5	151	5%	20.6	205
18	3/4	19	190	5%	23.9	238
20	13/16	23	225	5%	28.99	289
22	7/8	28	276	5%	33	322
24	1	37	368	5%	38	371
28	1-1/8	50	490	5%	57.5	562
32	1-5/16	62.5	621	5%	68.5	671
36	1-1/2	77	767	5%	80.4	789
40	1-5/8	87	868	5%	98.2	964
44	1-3/4	96	955	5%	118	1158
48	2	114	1137	5%	139	1364
56	2-1/4	159	1547	5%	184	1805
60	2-1/2	180	1784	5%	199	1952
64	2-5/8	209	2021	5%	222	2178



Construction:

12- Strand



Rope & Accessories



KINETIC RECOVERY ROPE

Kinetic Recovery Rope is used for dynamic vehicle recovery, where vehicles are stuck in mud, sand or snow. It's the safest and easiest product for getting vehicles unstuck. The Recovery Rope works like a rubber band. One end is attached to the stuck vehicle and the other end to the pulling vehicle.

The core part of Kinetic Recovery Rope is made of Nylon fiber and the cover is with HT polyester fiber.

Features:

- High elongation up to 30%
- Good corrosion resistance
- Excellent abrasion resistance & UV resistance
- Smooth surface, easy handling
- 45% lighter and stronger & than wire rope
- Allows for an even pull during recoveries
- No difference in tensile strength when wet or dry
- It does not curl, kink, or have burrs that can lead nasty cuts



Main Sizes:



14mm Breaking Strength 4T
ATVs, UTVs, and Snowmobiles



16mm Breaking Strength 6T
Side by Side ATVs



19mm Breaking Strength 8T
Light Weight Cars, 4x4s, & SUVs



22mm Breaking Strength 11T
Mid Weight Cars, 4x4s, & SUVs

POLYESTER TOW STRAP

Designed with reinforced loop ends to ensure a strong, safe, and durable use
Constructed from treated polyester webbing to ensure safety Much lighter
and easier to transport than towing chains. Its durable construction ensures
longevity, making it a trusted choice for various towing needs.



Features:

- Polyester material used in manufacturing is strong, durable and UV resistant
- Reinforced loops help protect against abrasion, maximum strength and durability.
- Reinforced loop ends for durability, reusable strap for easy storage.

Specification

Width (mm)	Length (m)	Min Breaking Strength (kg)	Elongation Rate %	Color
50	6m,9m or else	5000	>25	any
60	6m,9m or else	8000	>25	any
75	6m,9m or else	10000	>25	any
105	9m,11m or else	150000	>25	any

NOTE: other sizes can be custom made as required.

Applications



NYLON SNATCH STRAP

The Nylon Snatch Strap is a lifeline for vehicles in distress. Crafted from durable nylon webbing, this dynamic strap boasts unparalleled elasticity, providing the perfect balance of strength and flexibility. It's your go-to companion for safe and efficient vehicle recovery, ensuring every journey continues without a hitch.

Features:

- More than >20% elongation in nylon material.
- Adjustable, neoprene protective sleeves on both ends protect against abrasion.
- Reinforced loop ends for durability, reusable strap for easy storage.
- 100% Nylon construction with 23% stretch absorbs shock while the kinetic energy aids recovery
- Useful, convenient and easy to use.



Specification

Width (mm)	Length (m)	Min Breaking Strength (kg)	Elongation Rate %	Color
50	6m,9m or else	5000	>25	any
60	6m,9m or else	8000	>25	any
75	6m,9m or else	10000	>25	any
105	9m,11m or else	150000	>25	any

NOTE: other sizes can be custom made as required.

Applications



ULTRA TOW ROPE

Ultra tow rope is a type of rope made from Ultra-High Molecular Weight Polyethylene, a thermoplastic polymer known for its high strength and durability. This rope is characterized by its exceptional tensile strength, being significantly stronger than steel on a weight-for-weight basis, while also being lightweight. UHMWPE tow ropes are commonly used in demanding applications like maritime activities, off-road vehicle recovery, and various industrial and recreational uses.



Features:

- High Strength: Much stronger than steel, weight-for-weight.
- Lightweight: Easy to handle and transport.
- Durability: Resistant to wear and tear.
- Chemical/UV Resistance: Performs well in harsh conditions.
- Low Stretch: Minimal elongation under load.
- Buoyancy: Floats on water.

Specification

DIAMETER	DIAMETER	WEIGHT	KETX	KETX	BREAKING STRENGTH	BREAKING STRENGTH
mm	inch	100m(kg)	standard	error	ton	kn
12	1/2	8.8	87	5%	12.12	121
14	9/16	12	119	5%	15.4	153
16	5/8	15.5	151	5%	20.6	205
18	3/4	19	190	5%	23.9	238
20	13/16	23	225	5%	28.99	289
22	7/8	28	276	5%	33	322
24	1	37	368	5%	38	371
28	1-1/8	50	490	5%	57.5	562
32	1-5/16	62.5	621	5%	68.5	671
36	1-1/2	77	767	5%	80.4	789
40	1-5/8	87	868	5%	98.2	964
44	1-3/4	96	955	5%	118	1158
48	2	114	1137	5%	139	1364
56	2-1/4	159	1547	5%	184	1805
60	2-1/2	180	1784	5%	199	1952
64	2-5/8	209	2021	5%	222	2178
72	3	268	2598	5%	274	2688
80	3-1/4	328	3195	5%	333	3266
88	4	427	4170	5%	390	3825
96	3-5/9	509	4970	5%	455	4463

NOTE: other sizes can be custom made as required.

Applications



OFFROAD ACCESSORIES

Winch Hook



Thimble



Snatch Block



Shackles



Fairlead



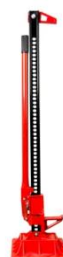
Hitch Receiver



Trailer Hitch Ball Mount



High Lift Jack



OFFROAD RECOVERY KIT

1. Basic Kits

Suitable for light to moderate offroad recovery scenarios.



2. Intermediate Kits

Suitable for moderate to challenging offroad recovery scenarios.



3. Advanced Kits

Suitable for extreme offroad recovery situations.



NOTE: Other recovery kits can be also custom made upon request.



NOW

Experience the Duracordix Difference

Don't just meet industry standards;
redefine them.

Reach out to Duracordix today to
discover products that intertwine
quality with reliability, ensuring your
project stands the test of time.



Phone Number:
0086 13553064622

Website:
www.duracordix.com

GET IN TOUCH

Email Us:
info@duracordix.com

Address:
Industrial Concentration
Zone, Cao Dian Town,
Bao ying County, Yangzhou
City, China